

LIPOSABER™

POWER LIPOSUCTION



b BLACK & BLACK
SURGICAL

VITRUVIAN™
Perfection in Body Sculpting

LIPOSABER™ Power Liposuction

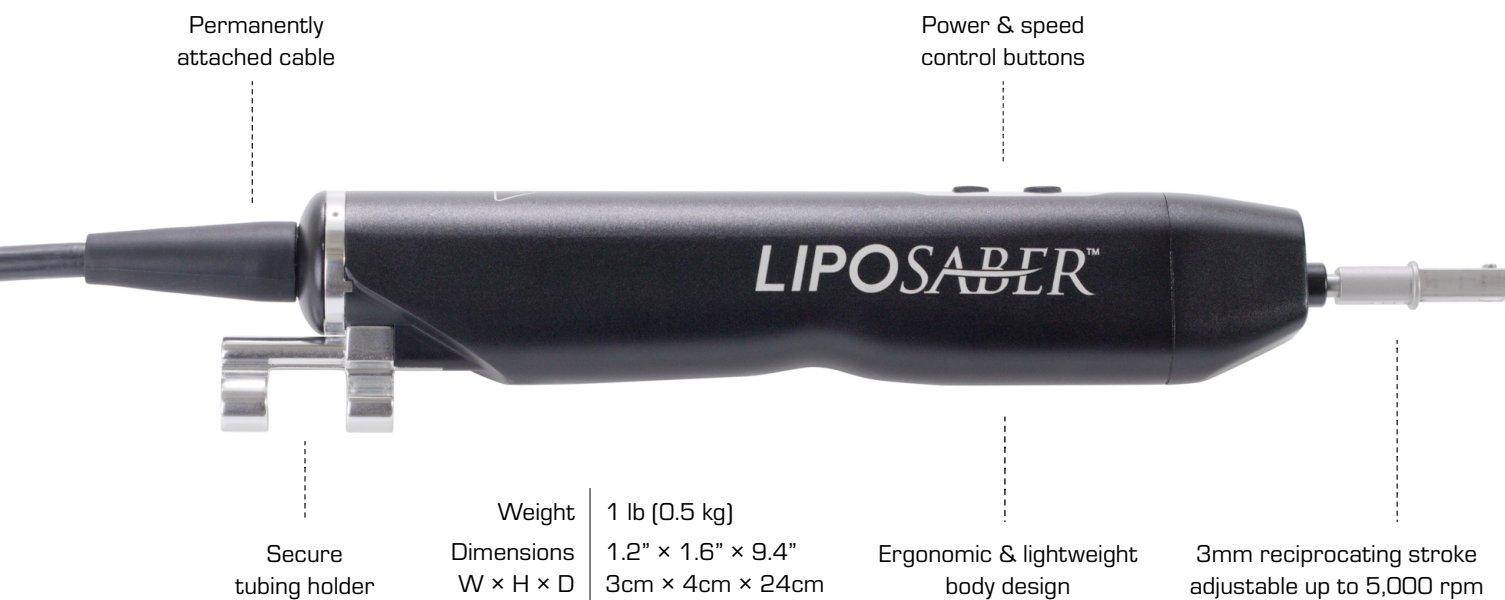
Vitruvian™ Liposaber™ Power Handpiece - B89095

Black and Black Surgical's Vitruvian™ Liposaber™ advances the pursuit of perfection in body sculpting. Our robust power handpiece enhances efficiency and precision during any liposuction procedure.

The Liposaber's reciprocating cannulas glide through any tissue with ease, minimizing surgeon fatigue.

Our lightweight, ergonomic, and balanced handpiece is uniquely designed for enhanced comfort, reduced hand fatigue, and greater stability.

A permanently attached power cable increases durability during use and reprocessing.



Looped tubing reduces vibration

Easy to use on/off and speed control buttons

Tubing holder keeps tubing secure

Permanently attached cable for durability



Vitruvian™ Liposaber™ Control Unit - B89096

Designed with space saving in mind, the small footprint of the control unit integrates seamlessly into any operating room. Its small size and lightweight frame make moving the unit from one location to another effortless. The bright LED display, showing speed, is easily viewed from anywhere in the room.

Footprint W × H × D	6.6" × 4.9" × 7.3" (16.8cm × 12.5cm × 18.5cm)
Weight	3.7 lbs (1.7 kg)
Electrical	100-240VAC, 50/60Hz, 0.1-0.2 A



Speed display

Handpiece On/Off

Speed adjustable in increments
of 100 rpm

Power Liposuction Cannulas

Using tight tolerances to minimize vibration, this superior, reusable cannula is fabricated from the highest-quality materials. See available patterns on page 7.

- Reusable / Autoclavable
- Cannula tubing connector designed for a non-slip fit for both aspiration and infiltration
- Full line of sizes and patterns
- High quality materials and craftsmanship
- Made in the USA from patented design
US Patent D950,045 / D950,046



LIPOSABLER™ Power Liposuction

Vitruvian™ Ultimate Aspirator - B89025

The Black & Black Vitruvian™ Ultimate Aspirator is one of the most powerful, quiet and versatile liposuction aspirators on the market. Powered by two oil-less, rocking piston vacuum pumps, this machine provides excellent suction power along with quiet operation. Its dual voltage motor can be used with 120V/230V electrical service.

Our Vitruvian™ Ultimate Aspirator is carefully designed for optimal performance, with an upright stance and shopping-cart style handle for ease of mobility. Bright LED vacuum gauges are easy to read. The collection canisters are mounted for ease of viewing during surgery. The single knob control can be adjusted 0 to 29 in. of Hg vacuum.

- Large 3" hospital-grade wheels
- Dual pneumatic foot-switches
- Dual-voltage motors - 120V/230V
- Bright, easy-to-read vacuum gauges
- Dual motors for optimal performance
- Quiet operation (50 dB)
- Easy-to-see collection canisters
- Extendable pole to hold fluid bags



Footprint W x H x D	18" x 38" x 18" (45cm x 97cm x 45cm)
Weight	120 lbs (54 kg)
Electrical	120-230 VAC, 50/60Hz
Sound Level	50 dB
Max Flow Rate	6.4 CFM
Max Vacuum	29 in of Hg

Sterile Tubing



B 89205

High Flow Tapered Aspiration Tubing,
10' length, 10 per box. Single use,
sterile.

Accessories

B 89140	Vitruvian™ Collection Canisters
B 89104	Aspirator Filter
B 89220	Filter Connecting Tubing

Vitruvian™ Infiltration Pump - B89055

The Black & Black Vitruvian™ Infiltration Pump is a counting peristaltic pump that uses three rollers to create a smooth pumping action to deliver tumescent fluid to the operative site.

Powered by a state-of-the-art stepper motor, this machine provides a smooth and consistent pumping action at a rate of up to 1000mL/min.

The Vitruvian™ Infiltration Pump was designed with industry leading features such as fluid counting technology, a rate adjusting knob, prime button, reverse switch, and dual foot pedals that can be used in “momentary” or “maintained” mode. Large, bright LEDs are easily viewed from anywhere in the room and clearly display both volume and rate.

- Peristaltic pump with three rollers
- Dual-voltage motor – 100V/240V
- Bright, easy-to-read display screen
- Volume (mL) and Rate (mL/min) displayed
- Reverse switch for flow direction preference
- Prime button for fast filling of tubing line
- Momentary / maintained pneumatic foot-switch functions (For ON/OFF action or continuous action, respectively)



Footprint W × H × D	11" × 7" × 8" (28.5cm × 18cm × 20.7cm)
Weight	7.2 lbs (3.2 kg)
Electrical	100–240VAC, 50/60Hz, 1.8–1.0 A
Speed	1 to 1000 mL/min

Sterile Tubing



B 89213

SofTouch™ Pump Tubing, single spike,
13' length, 10 per box. Single use,
sterile.

Fat Collection Canisters

Canister Kits are completely autoclavable and include:

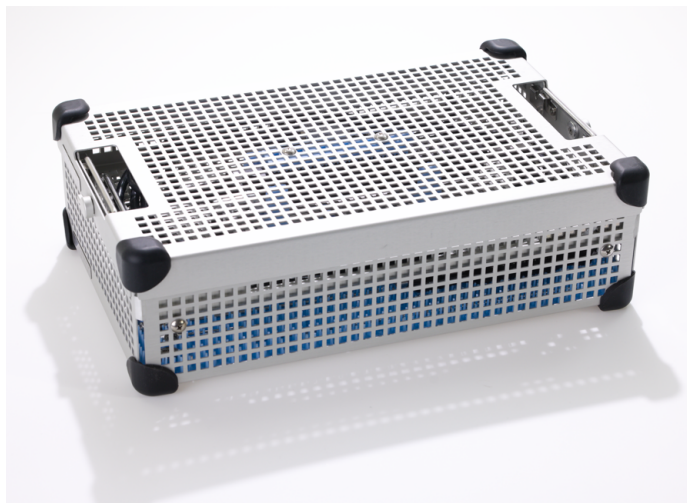
- Reusable canister, lid and stand
- Large bore universal taper fitting
- 6' silicone suction tubing with coupling piece
- Silicone transfer tube with C-Clamp + Luer fitting
- Silicone transfer tube with C-Clamp + Toomey syringe fitting
- Silicone Transfer Tube With C-Clamp + Tapered Port Fitting

B 89111	500ml Canister kit
B 89110	1000ml Canister kit
B 89116	2000ml Canister kit
B 89117	3000ml Canister kit

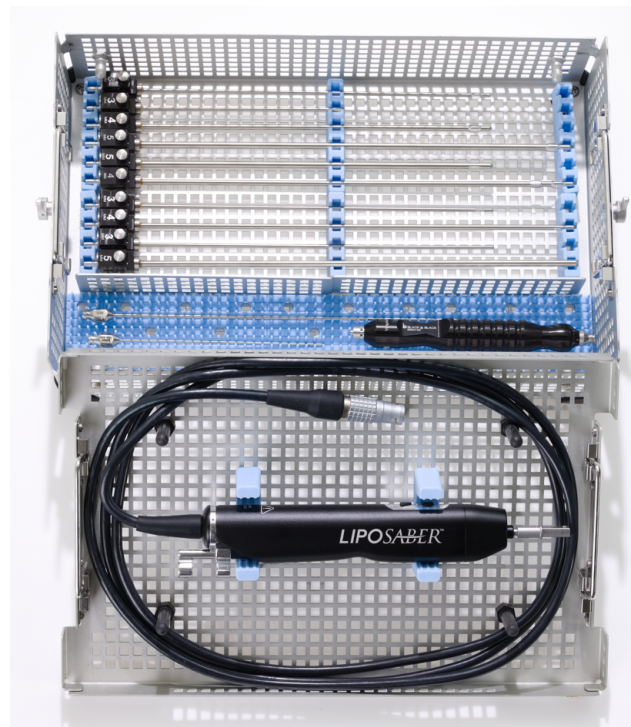


Sterilization Tray - B66355

Double level tray holds one handpiece and cable, up to ten cannulas, and accessories. Accommodates cannulas up to 32cm in length.



Dimensions | 15.2" × 9.6" × 4.1"
(39cm × 24cm × 10.5cm)



Popular Cannula Patterns



ACCELERATOR

8B-III-315 PWR	3MM × 15CM STRAIGHT
8B-III-326 PWR	3MM × 26CM STRAIGHT
8B-III-332 PWR	3MM × 32CM STRAIGHT
8B-III-426 PWR	4MM × 26CM STRAIGHT
8B-III-432 PWR	4MM × 32CM STRAIGHT
8B-III-436 PWR	4MM × 36CM STRAIGHT
8B-III-526 PWR	5MM × 26CM STRAIGHT
8B-III-532 PWR	5MM × 32CM STRAIGHT



MIRRORED ACCELERATOR

8B-MIII-326 PWR	3MM × 26CM STRAIGHT
8B-MIII-332 PWR	3MM × 32CM STRAIGHT
8B-MIII-426 PWR	4MM × 26CM STRAIGHT
8B-MIII-432 PWR	4MM × 32CM STRAIGHT
8B-MIII-526 PWR	5MM × 26CM STRAIGHT
8B-MIII-532 PWR	5MM × 32CM STRAIGHT



BASKET

8B-BAS-326 PWR	3MM × 26CM STRAIGHT
8B-BAS-332 PWR	3MM × 32CM STRAIGHT
8B-BAS-426 PWR	4MM × 26CM STRAIGHT
8B-BAS-426 ANG PWR	4MM × 26CM ANGLED
8B-BAS-432 PWR	4MM × 32CM STRAIGHT
8B-BAS-432 ANG PWR	4MM × 32CM ANGLED
8B-BAS-440 PWR	4MM × 40CM STRAIGHT
8B-BAS-440 ANG PWR	4MM × 40CM ANGLED
8B-BAS-526 PWR	5MM × 26CM STRAIGHT
8B-BAS-526 ANG PWR	5MM × 26CM ANGLED
8B-BAS-532 PWR	5MM × 32CM STRAIGHT
8B-BAS-532 ANG PWR	5MM × 32CM ANGLED
8B-BAS-536 PWR	5MM × 36CM STRAIGHT
8B-BAS-536 ANG PWR	5MM × 36CM ANGLED



DOUBLE BASKET

8B-DBAS-326 PWR	3MM × 26CM STRAIGHT
8B-DBAS-332 PWR	3MM × 32CM STRAIGHT
8B-DBAS-332 ANG PWR	3MM × 32CM ANGLED
8B-DBAS-426 PWR	4MM × 26CM STRAIGHT
8B-DBAS-432 PWR	4MM × 32CM STRAIGHT
8B-DBAS-432 ANG PWR	4MM × 32CM ANGLED
8B-DBAS-440 PWR	4MM × 40CM STRAIGHT
8B-DBAS-440 ANG PWR	4MM × 40CM ANGLED
8B-DBAS-526 PWR	5MM × 26CM STRAIGHT
8B-DBAS-532 PWR	5MM × 32CM STRAIGHT
8B-DBAS-532 ANG PWR	5MM × 32CM ANGLED
8B-DBAS-540 PWR	5MM × 40CM STRAIGHT
8B-DBAS-540 ANG PWR	5MM × 40CM ANGLED



SPATULA

8B-SPA-315 PWR	3MM × 15CM STRAIGHT
8B-SPA-415 PWR	4MM × 15CM STRAIGHT



MERCEDES

8B-MER-215 PWR	2MM × 15CM STRAIGHT
8B-MER-315 PWR	3MM × 15CM STRAIGHT
8B-MER-326 PWR	3MM × 26CM STRAIGHT
8B-MER-332 PWR	3MM × 32CM STRAIGHT
8B-MER-332 ANG PWR	3MM × 32CM ANGLED
8B-MER-426 PWR	4MM × 26CM STRAIGHT
8B-MER-426 ANG PWR	4MM × 26CM ANGLED
8B-MER-432 PWR	4MM × 32CM STRAIGHT
8B-MER-432 ANG PWR	4MM × 32CM ANGLED
8B-MER-436 PWR	4MM × 36CM STRAIGHT
8B-MER-436 ANG PWR	4MM × 36CM ANGLED
8B-MER-526 PWR	5MM × 26CM STRAIGHT
8B-MER-526 ANG PWR	5MM × 26CM ANGLED
8B-MER-532 PWR	5MM × 32CM STRAIGHT
8B-MER-532 ANG PWR	5MM × 32CM ANGLED
8B-MER-536 PWR	5MM × 36CM STRAIGHT
8B-MER-536 ANG PWR	5MM × 36CM ANGLED



DOUBLE MERCEDES

8B-DMER-326 PWR	3MM × 26CM STRAIGHT
8B-DMER-426 PWR	4MM × 26CM STRAIGHT
8B-DMER-432 PWR	4MM × 32CM STRAIGHT
8B-DMER-436 PWR	4MM × 36CM STRAIGHT
8B-DMER-526 PWR	5MM × 26CM STRAIGHT
8B-DMER-532 PWR	5MM × 32CM STRAIGHT
8B-DMER-536 PWR	5MM × 36CM STRAIGHT



HELIX 3-PORT

8B-HLX-326 PWR	3MM × 26CM STRAIGHT
8B-HLX-332 PWR	3MM × 32CM STRAIGHT
8B-HLX-426 PWR	4MM × 26CM STRAIGHT
8B-HLX-432 PWR	4MM × 32CM STRAIGHT
8B-HLX-436 PWR	4MM × 36CM STRAIGHT
8B-HLX-526 PWR	5MM × 26CM STRAIGHT
8B-HLX-532 PWR	5MM × 32CM STRAIGHT
8B-HLX-536 PWR	5MM × 36CM STRAIGHT



LARGE VOLUME HARVESTER

8B-LVH-326 PWR	3MM × 26CM STRAIGHT
8B-LVH-332 PWR	3MM × 32CM STRAIGHT
8B-LVH-426 PWR	4MM × 26CM STRAIGHT
8B-LVH-432 PWR	4MM × 32CM STRAIGHT
8B-LVH-440 PWR	4MM × 40CM STRAIGHT
8B-LVH-526 PWR	5MM × 26CM STRAIGHT
8B-LVH-532 PWR	5MM × 32CM STRAIGHT



CANDY CANE

8B-CC-326 PWR	3MM × 26CM STRAIGHT
8B-CC-426 PWR	4MM × 26CM STRAIGHT
8B-CC-432 PWR	4MM × 32CM STRAIGHT
8B-CC-436 PWR	4MM × 36CM STRAIGHT
8B-CC-526 PWR	5MM × 26CM STRAIGHT
8B-CC-532 PWR	5MM × 32CM STRAIGHT

LIPOSABER™ Power Liposuction

Vitruvian™ Manual Aspiration Handle for Power Cannulas

B 89VMH



Power Liposuction Starter Set

B 8B-MER-326 PWR	Mercedes Power Cannula 3mm × 26cm
B 8B-MER-432 PWR	Mercedes Power Cannula 4mm × 32cm
B 8B-BAS-432 PWR	Basket Power Cannula 4mm × 32cm
B 8B-III-326 PWR	Accelerator Power Cannula 3mm × 26cm
B 8B-III-432 PWR	Accelerator Power Cannula 4mm × 32cm
B 8B-SPA-315 PWR	Spatula Power Cannula 3mm × 15cm



Order from Black & Black Surgical

Black & Black Surgical, Inc.

5175 South Royal Atlanta Drive

Tucker, Georgia, 30084 USA

info@blackandblacksurgical.com

877-252-2517 or 770-414-4880

770-414-4879 Fax

www.blackandblacksurgical.com/liposaber